

# NEWSLETTER No. 14 Wednesday May 21st 2025

## JUNIOR ASSEMBLY - Friday 23rd May from 3:00pm

Congratulations to the following students on receiving the **Class Award** for their class this week. Certificates will be presented this Friday at assembly.

Prep M— Oceania M, Tommy W.

Prep P— Tessa M, Amelia A.

Prep T— Mason P, Makani B.

1A— Jax C, Elizabeth G.

1F—Renzo RT, Nell K.

1K—Lexie K, William T.

2H—Eloise B.

2K— Conor D, Adalin F, Annie H.

2M—Zahra McD, Evan S.

2N—Charlie B, Callum R.



## DATES TO REMEMBER- PLEASE CHECK FOR UPDATES

May 19 <sup>th</sup> – 23 <sup>rd</sup>	<b>Book Fair all week in the Library</b>	Tuesday 17 <sup>th</sup> June	School Council Meeting for June 6pm
Wednesday 21 <sup>st</sup> May	National Simultaneous Book Read 'The Truck Cat'	June 23 <sup>rd</sup> -27 <sup>th</sup>	Prep – Yr 2 Swimming & Water Safety \$30
Friday 23 <sup>rd</sup> May	Houses Athletics Yr. 3-6 Landy Field	June 30 <sup>th</sup> – July 4 <sup>th</sup>	Yr. 3-6 Swimming & Water Safety \$30
Thursday 29 <sup>th</sup> May	Winter Lightning Prems -Yr 5/6	Wednesday 30 <sup>th</sup> July	<b>Shine Day</b>
Friday 30 <sup>th</sup> May	Grade 1 Werribee Zoo Excursion\$49	Tuesday 9 <sup>th</sup> September	Science Expo
Friday 6 <sup>th</sup> June	Curriculum Day		

## TISSUES FOR CLASSROOMS

We are asking for donations of boxes of tissues for our classrooms please.

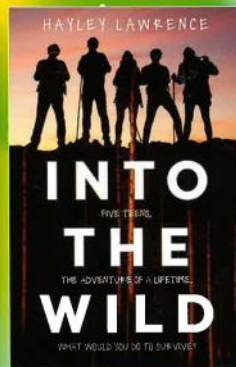
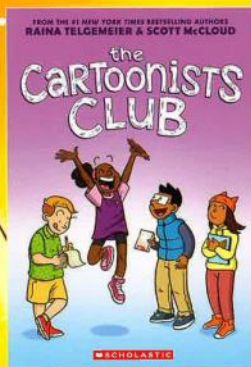
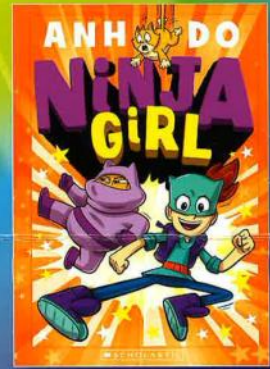
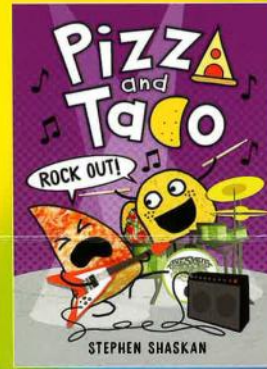
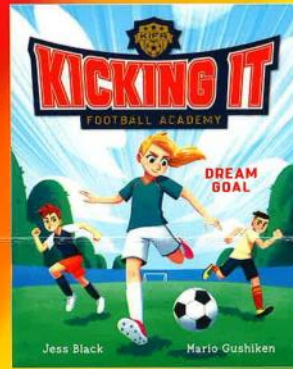
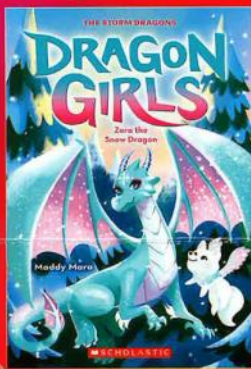
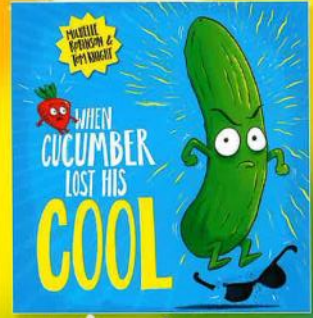
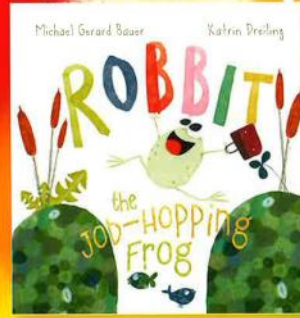
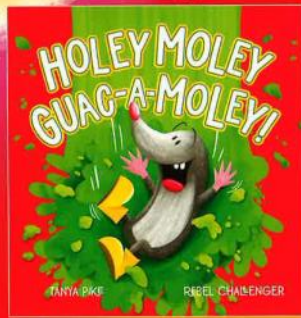
Any donations gratefully accepted and can be delivered to your child's classroom or the office.

*Thank you in anticipation!*





# You're invited to our SCHOLASTIC Book Fair



Take  
the 31-Day  
Challenge



Date **MON 19<sup>TH</sup> - FRI 23<sup>RD</sup> MAY**

Time **Before school 8:30-8:50**  
**After school 3:30-4pm**

Place **LIBRARY**

EVERY DOLLAR EQUALS RESOURCES FOR OUR SCHOOL



SCHOLASTIC  
REWARDS





# FOODBANK NEEDS YOUR HELP

With the rising cost of living, demand for our services is increasing, as are the running costs of our foodbank. Donations of groceries are gladly accepted, as are cash donations. Donations of \$2 or more are tax-deductible - see our website for payment info & contact the office for a receipt.

FOR MORE INFORMATION:

✉ [dfs@dcchurch.org.au](mailto:dfs@dcchurch.org.au) 🌐 [dcchurch.org.au/family-support](http://dcchurch.org.au/family-support)

☎ 0492 875 069

📍 276-290 Jetty Road, Curlewis



## Join the circular economy!

### Welcome to Your Community Collection Point!

This is one of 20 new Community Collection Points across Greater Geelong! Here, you can drop off your used plastic lids and be part of an exciting recycling project!

### Why Are We Doing This?

Did you know, anything in your recycling bin smaller than a credit card can't be recycled currently? SOEL and the City of Greater Geelong are working together to reduce plastic waste and keep lids out of landfills. Our goal is to recycle them into useful materials for local businesses and schools while helping our environment.

### How It Works:

1. Drop off your used plastic lids right here!
2. SOEL will collect, sort, and clean them.
3. The lids will be recycled into new products to support local businesses and education.
4. You'll receive a free plastic recycling workshop.
5. The school that collects the most lids will win a Bench made of 20,000 lids!

### Why It Matters:

By recycling your lids, you're helping to reduce waste, support sustainability, and make Greater Geelong a greener place!

### Collection:

SOEL will drop by once a month to collect your lids and put them to good use.

### Join the Movement!





# School Lids Collection for a Sustainable Future



## How to collect

- **Collect** your plastic milk lids (look for Type 2 or 4 plastics).
- **Wash** the lids thoroughly and let them dry.
- **Bring** the clean, dry lids to school and drop them in the collection bag.

Every lid you collect will be repurposed into something new, contributing to a more sustainable world.



[www.soel.org.au](http://www.soel.org.au)

Southern Ocean Environmental Link





**In 2024 the Fresh Lunch Fairy  
will be using Flexischools for online  
lunch orders at your school.**

**SPECIAL OFFER**

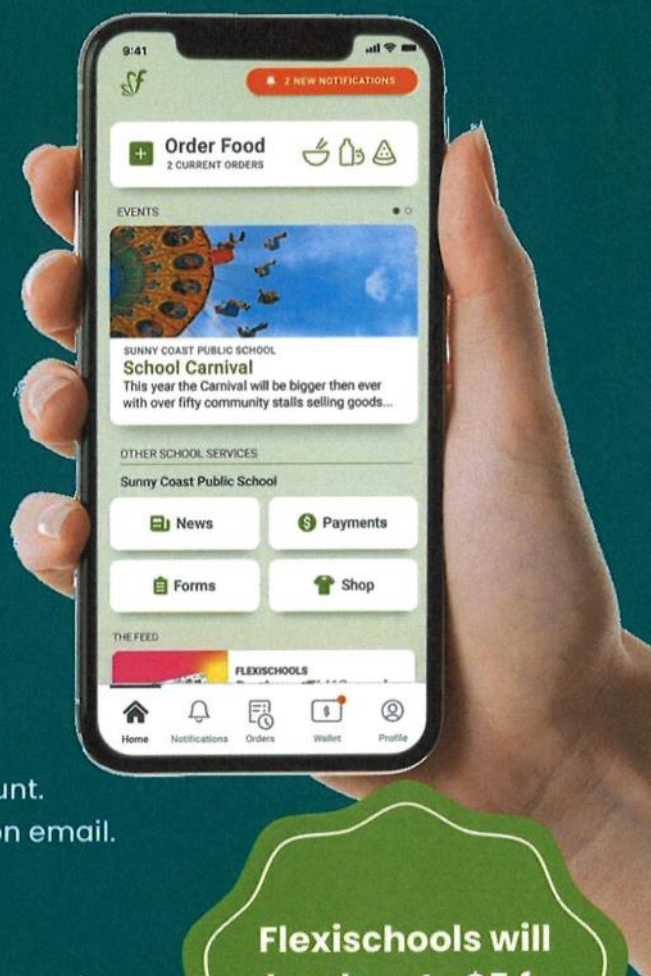
**Register for  
Flexischools by Friday  
9th February  
and get \$5 towards  
your first order!**

**Quickly place lunch orders  
online with Flexischools!**

- Download the Flexischools App
- Submit your email address to create an account.
- Confirm your email address via the registration email.
- Follow the registration process
- Add your students to your account.

Every family that registers a new account by  
9th February will receive \$5 from Flexischools.

This will be deposited into your Flexischools  
account the following week.



**Flexischools will  
also donate \$5 for  
every registration  
directly to your  
school!**



**Scan to download the app  
& register for Flexischools  
or visit [flexischools.com.au](https://flexischools.com.au)**







**QUEENSCLIFF, VIC  
COMMUNITY SCREENING**



***Friday, 23rd May 2025***



**Queenscliff Uniting Church  
85 Hesse Street, Queenscliff, VIC, 3225**



***7:00pm***

---

**Get tickets at [seenthefilm.com](https://seenthefilm.com)**





## CAMPS, SPORTS & EXCURSION FUND (CSEF)

If you hold a **Health Care Card, Pension Card or are a Foster Parent**, you may be eligible for the CSEF.

You can receive \$154 per child which can go towards the cost of your child participating in any sports, camps or excursions.

Any unspent money will be carried over to the following year.

If you were successful in receiving CSEF at CSPS in 2024, you DO NOT have to re-apply in 2025.

If you have

- recently qualified for a Health Care Card,
- are a new Foster parent or
- didn't apply last year at CSPS, please contact the office for an application form.

If you're unsure contact the Office 5251 3581  
*Applications are due by the end of Term 1.*

## BELL TIMES FOR 2025

8:50am(music) Come inside-unpack bag

9:00am -11:00am Morning session

11:00am - 11:20am **Play time**

11:20am—11:30am **Eating time**

11:30am—1:30pm Middle session

1:30pm—1:40pm **Lunch Eating time**  
(lunch orders delivered now)

1:40pm—2:20pm **Lunch play**

2:20pm—2:30pm **Lunch Eating time**

2:30pm—3:30pm Afternoon session

## STAFF CAR PARK

A reminder to parents that the **staff car park is not to be used, to park or drive through, to drop off or collect children from school UNLESS you are collecting them from sick bay or accessing the disabled car park**

We appreciate your co-operation with this!



## COMPASS EVENTS & FORMS

**Please set up alerts on your Compass App so you don't miss anything important..**

We are asking parents to give permission via Compass for,

- Students to have photos taken for the newsletter, local fliers etc
- Local Excursion permission

## UPDATING OF ENROLMENT DETAILS

We have emailed out what we have on record as your enrolment details.

***Please check all details carefully, especially student medical conditions, contact details, any restrictions and Emergency contacts.***

*If any details are incorrect, please return the paperwork with changes made, to the office.*

*If your details are correct we would appreciate an email to confirm this being sent to;*

## BRINGING THINGS INTO SCHOOL FOR YOUR CHILD

If you need to bring lunch or a forgotten item to school for your child, please enter through the front door near Admin and drop it off at the Office.

We will happily deliver it to your child with the least disruption to their learning time.

## UNIFORM REMINDERS!

- Leggings and tights can be navy blue (Not black or white or any other colour) and worn under shorts, skort or skirt.
- Shorts, Skorts, Tracksuit Pants are all required to be **ROYAL BLUE** not black or navy.
- Any hair longer than collar length (boys and girls) needs to be completely tied up.
- Make- up is not to be worn.

We are proud of our uniform and would like everyone to be in correct school uniform!

*Thank you for your assistance with this*



# Social and Emotional Learning CD Kids



A group for Kinder and Primary school aged children



Tools and skills for children to  
navigate life's challenges with  
more understanding and  
resilience.

9 week program full  
of story telling,  
meditation,  
movement and art.



To find out  
more, scan  
the Qr Code!

