

NEWSLETTER No.12 Tuesday May 6th 2025

DATES TO REMEMBER- PLEASE CHECK FOR UPDATES

Wednesday 7 th May	Wonderful Women's Stall \$10 limit	Tuesday 20 th May	School Council Meeting for May 6pm (No meeting for April)
Wednesday 7 th May	Bunjil X-Country \$7.50	Monday 21 st May	National Simultaneous Book Read 'The Truck Cat'
Thursday 8 th May	Prep Wonderful Women's Afternoon Gumboot Toss	Friday 23 rd May	Houses Athletics Yr. 3-6 Landy Field
Friday 9 th May	Curriculum Day	Thursday 29 th May	Winter Lightning Prems -Yr 5/6
May 12 th -16 th	Education Week	Friday 30 th May	Grade 1 Werribee Zoo Excursion \$49
Monday 12 th May	Open Classroom 2:30-3:30	Friday 6 th June	Curriculum Day
Tuesday 13 th May	Tour for 2026 prep families 2:30pm Please RSVP	Tuesday 17 th June	School Council Meeting for June 6pm
Wednesday 14 th May	Tour for 2026 prep families at 9:30am & 6:30pm Please RSVP	June 23 rd - 27 th	Prep – Yr 2 Swimming & Water Safety \$30
May 14 th -16 th	Yr 5 - Camp Cooriemungle	June 30 th – July 4 th	Yr. 3-6 Swimming & Water Safety \$30
May 19 th – 23 rd	Book Fair all week in the Library		

SCHOLASTIC BOOK CLUB

Each month your child has the opportunity to bring home the Scholastic Book Club magazine to order books from.

Issue 3 has been sent home and orders are due MONDAY May 12th

Please send your order with correct payment, or order ONLINE with credit card via
www.scholastic.com.au

TISSUES FOR CLASSROOMS

We are asking for donations of boxes of tissues for our classrooms please.

Any donations gratefully accepted and can be delivered to your child's classroom or the office.

Thank you in anticipation!



Harps a Breeze = 3

On Friday May 2nd, the Year 3-6's attended a fabulous, fun and engaging Harmonica incursion (Harps a Breeze/ Chris Maunders). The students loved being introduced to this new instrument. We will continue exploring the Blues Harmonica in music lessons this term. Here are some photos from the incursion; including the biggest and smallest Harmonica, plus a beautiful chromatic instrument. Students now have their own harmonica and melody booklet, so they can continue to learn in music lessons and at home. Enjoy! Mrs Kelly



Harps a Breeze = 3





Harps a Breeze = 3



CLIFTON SPRINGS PRIMARY SCHOOL

We invite 2026 PREP families to come & tour our wonderful school and see the learning in action.

Education Week Tours

- Tuesday 13th May 2:30 - 3:20pm
- Wednesday 14th May 9:30 -10:20am
- Evening Tour Weds 14th May 6:30pm

RSVP required by Friday May 9th for the evening tour please

Please meet at the front office 5 mins prior to the tour commencing. Pre-school children welcome.

RSVP TODAY



5251 3581



www.clifton.springs.ps@education.vic.gov.au





WONDERFUL
WOMEN'S DAY

Raffle Hamper Prizes

CENTRE FOR EXCELLENCE VOUCHERS
BEAN CRAVIN VOUCHER
QUEENSCLIFF BOWLING CLUB VOUCHER
HAIRDRYER AND SO MUCH MORE

**TICKETS ON SALE AT THE
OFFICE**

**1 TICKET FOR \$2
3 TICKETS FOR \$5
5 TICKETS FOR \$7**

Raffle drawn next Friday 16th of
May

MARVELLOUS WOMEN'S DAY STALL 7TH MAY



**Maximum \$10 limit purchase per student -
If any items are left over they can be purchased from the
office**



**Small Umbrella
\$6.00**



**Trinket Box
\$5.00**



**Thermal Travel Mug
\$6.00**



**Sweet Sticky Notepad
\$1.00**



**Queenie Pen
\$3.00**



**Mum Moments Pen
\$2.00**



**Nail File
\$1.00**



**Mum & Me Bracelet Pair
\$5.00**



**Manicure Set
\$4.00**

MARVELLOUS WOMEN'S DAY STALL 7TH MAY



**Maximum \$10 limit purchase per student -
If any items are left over they can be purchased from the
office**



**Various magnet Frames
\$2.00**



**Leather Tassel Key Ring
\$3.00**



**Travel Jewellery Box
\$6.00**



**Hand and Nail Gift Set
\$4.00**



**Loving You Candle
\$4.00**



**Bamboo Chopping Board
\$6.00**



**Cupcake Bath Fitters
\$3.00**



**Panda & Puppy Paw Socks
\$4.00**



**Fresh Potted Colour
\$5.00**

Mother's Day Gumboot Toss



Clifton Springs Primary School would like to invite all our Mums / Grandmothers / Aunties or Special persons to join us for our annual Mother's Day Gumboot Toss Competition.

When: Thursday 8th May @ 3pm

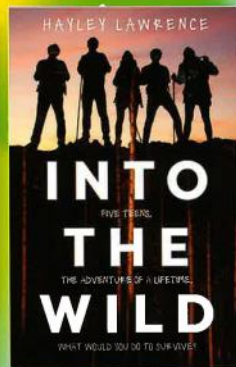
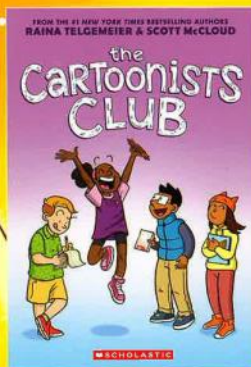
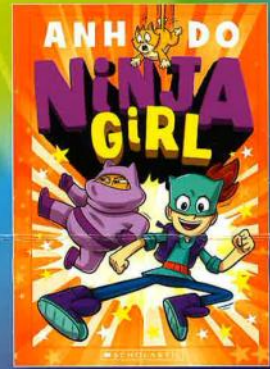
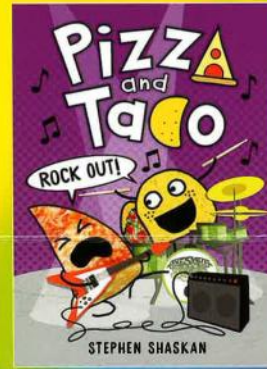
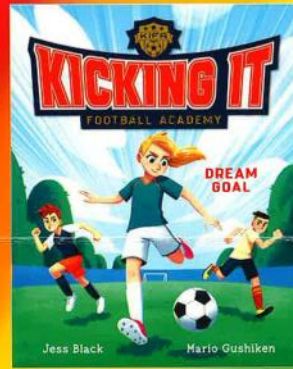
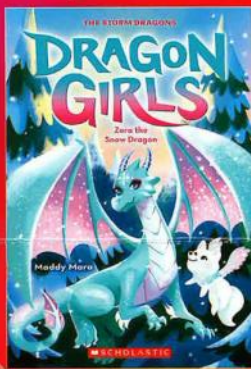
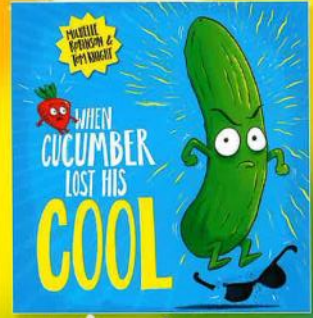
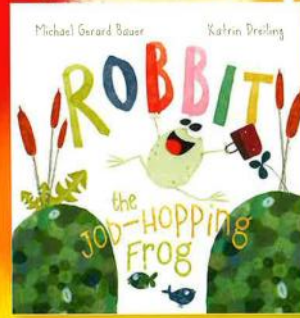
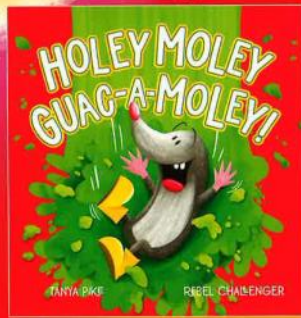
Where: Clifton Springs P.S Oval

A prize will be awarded to the winner. Gumboot is provided.





You're invited to our SCHOLASTIC Book Fair



Date **MON 19TH - FRI 23RD MAY**

Time **Before school 8:30-8:50**
After school 3:30-4pm

Place **LIBRARY**

EVERY DOLLAR EQUALS RESOURCES FOR OUR SCHOOL



**SCHOLASTIC
REWARDS**

What's On in Term 2

Find out
more



May
12 - 16

OSHC
LEGO®
Masters
Week

LEGO MASTERS

May June
16 - 20

Big Art
Comp
LEGO®
Masters
edition

LEGO MASTERS

June
11

World
Play
Day

LEGO CLASSIC

Every
Friday

Big Art
Fridays

On Fridays,
we
pARTy

June
9 - 13

Healthy
Eating
Week

Free webinar
for families

June
24

Unplug
Childhood

with Dr Justin
Coulson

Your
OSHC.

Before
and After
School Care

by  Camp
Australia

campaustralia.com.au/back-to-school-term-2



Join the circular economy!

Welcome to Your Community Collection Point!

This is one of 20 new Community Collection Points across Greater Geelong! Here, you can drop off your used plastic lids and be part of an exciting recycling project!

Why Are We Doing This?

Did you know, anything in your recycling bin smaller than a credit card can't be recycled currently? SOEL and the City of Greater Geelong are working together to reduce plastic waste and keep lids out of landfills. Our goal is to recycle them into useful materials for local businesses and schools while helping our environment.

How It Works:

1. Drop off your used plastic lids right here!
2. SOEL will collect, sort, and clean them.
3. The lids will be recycled into new products to support local businesses and education.
4. You'll receive a free plastic recycling workshop.
5. The school that collects the most lids will win a Bench made of 20,000 lids!

Why It Matters:

By recycling your lids, you're helping to reduce waste, support sustainability, and make Greater Geelong a greener place!

Collection:

SOEL will drop by once a month to collect your lids and put them to good use.

Join the Movement!



School Lids Collection for a Sustainable Future

How to collect

- **Collect** your plastic milk lids (look for Type 2 or 4 plastics).
- **Wash** the lids thoroughly and let them dry.
- **Bring** the clean, dry lids to school and drop them in the collection bag.

Every lid you collect will be repurposed into something new, contributing to a more sustainable world.



www.soel.org.au

Southern Ocean Environmental Link



**In 2024 the Fresh Lunch Fairy
will be using Flexischools for online
lunch orders at your school.**

SPECIAL OFFER

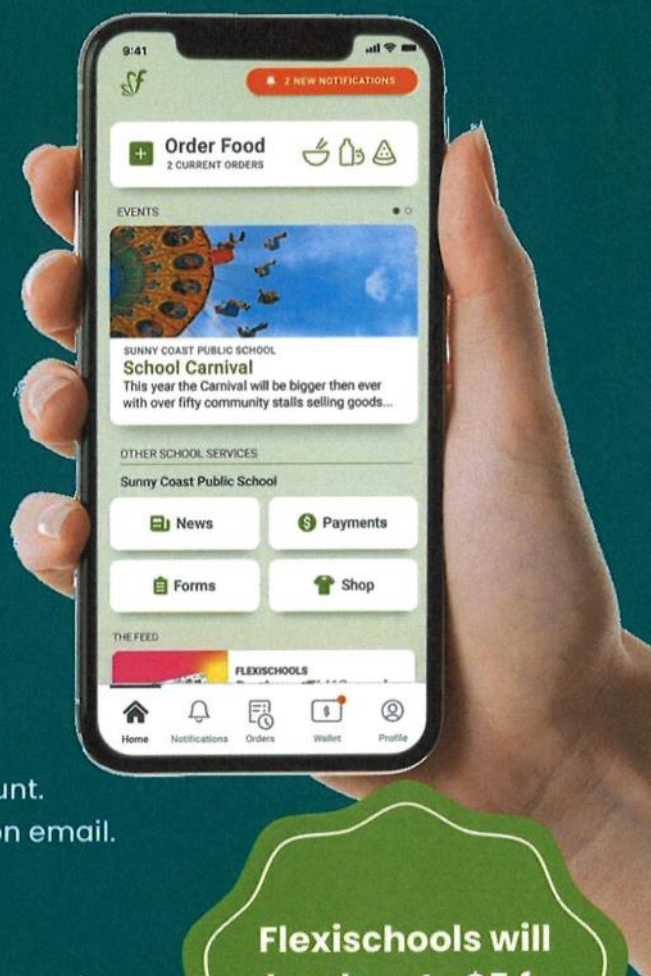
**Register for
Flexischools by Friday
9th February
and get \$5 towards
your first order!**

**Quickly place lunch orders
online with Flexischools!**

- Download the Flexischools App
- Submit your email address to create an account.
- Confirm your email address via the registration email.
- Follow the registration process
- Add your students to your account.

Every family that registers a new account by
9th February will receive \$5 from Flexischools.

This will be deposited into your Flexischools
account the following week.



**Flexischools will
also donate \$5 for
every registration
directly to your
school!**



**Scan to download the app
& register for Flexischools
or visit flexischools.com.au**





**QUEENSCLIFF, VIC
COMMUNITY SCREENING**



Friday, 23rd May 2025



**Queenscliff Uniting Church
85 Hesse Street, Queenscliff, VIC, 3225**



7:00pm

Get tickets at seenthefilm.com

GEELONG LITTLE ATHLETICS CROSS COUNTRY

COMMENCES 10TH MAY
RUNS THROUGH TO MID AUGUST

FIRST RUN IS @ EASTERN PARK
WITH RUNS OVER THE WINTER
SEASON TO BE HELD AT VARIOUS
LOCATIONS IN GEELONG AND
THE PENINSULA

DISTANCES RUN

500m - U6s only
1.0 km - U7s & U8s
1.5 km - U9s & U10s
2.0 km - U11s & U12s
3.0 km - U13s to U17s

**COST: \$40 IF CURRENT LAVIC
MEMBER (ADD \$55 LAVIC FEE IF
JOINING NOW)**

REGISTER NOW



geelongregistrar@lavic.com.au



CAMPS, SPORTS & EXCURSION FUND (CSEF)

If you hold a **Health Care Card, Pension Card or are a Foster Parent**, you may be eligible for the CSEF.

You can receive \$154 per child which can go towards the cost of your child participating in any sports, camps or excursions.

Any unspent money will be carried over to the following year.

If you were successful in receiving CSEF at CSPS in 2024, you DO NOT have to re-apply in 2025.

If you have

- recently qualified for a Health Care Card,
- are a new Foster parent or
- didn't apply last year at CSPS, please contact the office for an application form.

If you're unsure contact the Office 5251 3581
Applications are due by the end of Term 1.

BELL TIMES FOR 2025

8:50am(music) Come inside-unpack bag

9:00am -11:00am Morning session

11:00am - 11:20am **Play time**

11:20am—11:30am **Eating time**

11:30am—1:30pm Middle session

1:30pm—1:40pm **Lunch Eating time**
(lunch orders delivered now)

1:40pm—2:20pm **Lunch play**

2:20pm—2:30pm **Lunch Eating time**

2:30pm—3:30pm Afternoon session

STAFF CAR PARK

A reminder to parents that the **staff car park is not to be used, to park or drive through, to drop off or collect children from school UNLESS you are collecting them from sick bay or accessing the disabled car park**

We appreciate your co-operation with this!



COMPASS EVENTS & FORMS

Please set up alerts on your Compass App so you don't miss anything important..

We are asking parents to give permission via Compass for,

- Students to have photos taken for the newsletter, local fliers etc
- Local Excursion permission

UPDATING OF ENROLMENT DETAILS

We have emailed out what we have on record as your enrolment details.

Please check all details carefully, especially student medical conditions, contact details, any restrictions and Emergency contacts.

If any details are incorrect, please return the paperwork with changes made, to the office.

If your details are correct we would appreciate an email to confirm this being sent to;

BRINGING THINGS INTO SCHOOL FOR YOUR CHILD

If you need to bring lunch or a forgotten item to school for your child, please enter through the front door near Admin and drop it off at the Office.

We will happily deliver it to your child with the least disruption to their learning time.

UNIFORM REMINDERS!

- Leggings and tights can be navy blue (Not black or white or any other colour) and worn under shorts, skort or skirt.
- Shorts, Skorts, Tracksuit Pants are all required to be **ROYAL BLUE** not black or navy.
- Any hair longer than collar length (boys and girls) needs to be completely tied up.
- Make- up is not to be worn.

We are proud of our uniform and would like everyone to be in correct school uniform!

Thank you for your assistance with this



Social and Emotional Learning CD Kids



A group for Kinder and Primary school aged children



Tools and skills for children to
navigate life's challenges with
more understanding and
resilience.

9 week program full
of story telling,
meditation,
movement and art.



To find out
more, scan
the Qr Code!

